

US Army Corps of  
Engineers®  
ENGINEERING AND SUPPORT CENTER  
HUNTSVILLE, AL



US Army Corps of  
Engineers®  
HUNTSVILLE CENTER

# CHILD DEVELOPMENT CENTER (CDC) STANDARD DESIGN, SMALL 0 - 5 YEARS OLD

## CENTER OF STANDARDIZATION

CATEGORY CODE: 74017

CONTRACT NUMBER : N/A

SOLICITATION NUMBER : N/A

PUBLISHED: 30 SEPT 2018

MARK	DESCRIPTION	DATE	APPR

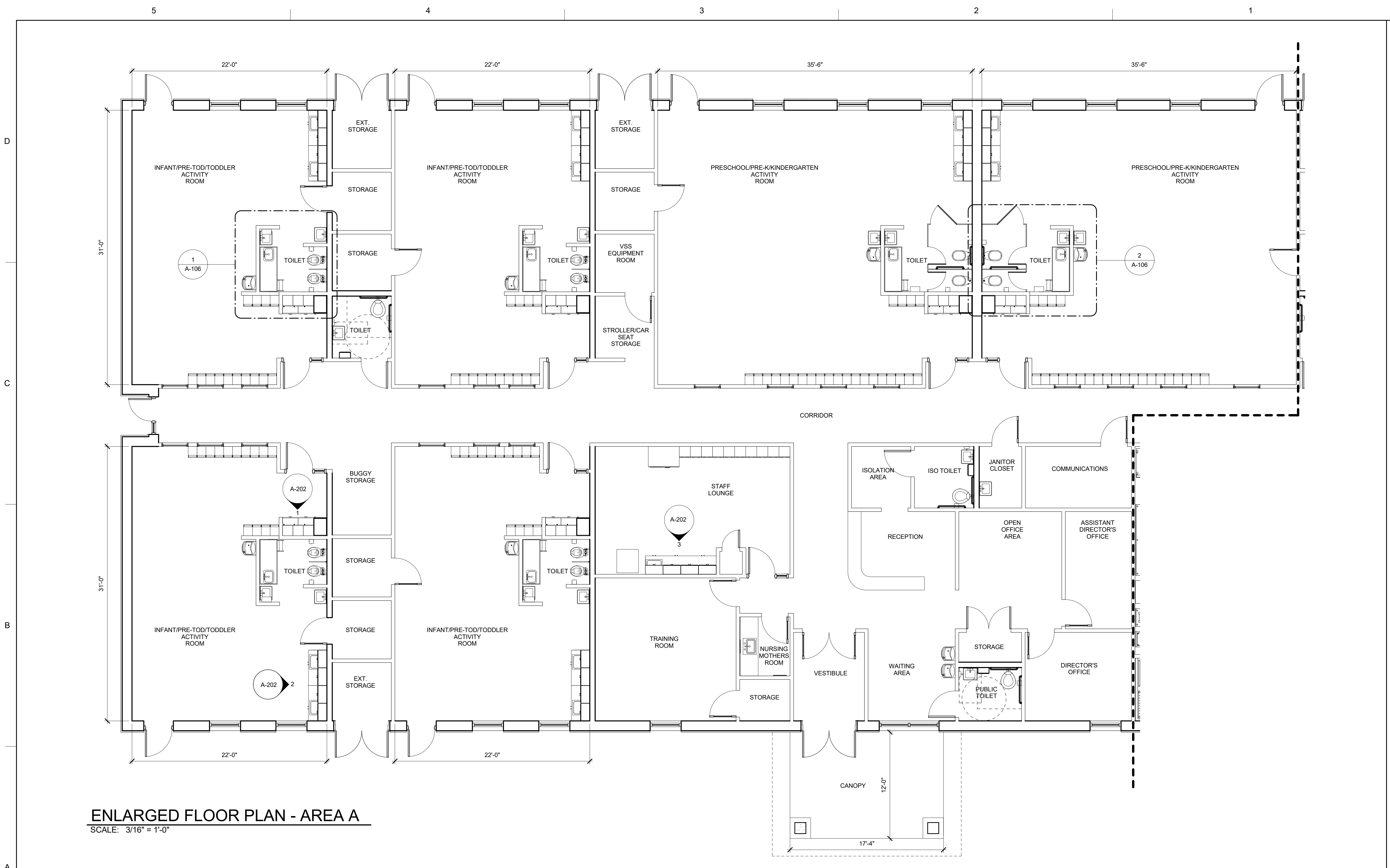
DESIGN BY: Designer Admin	CHKD BY: Checker	DATE 30 SEPT 2018	SOLICITATION NO. N/A
SMAT BY: Approver	PLOT DATE: 9/28/2018	CONTRACT NO. N/A	CATEGORY CODE: N/A
PLOT SCALE 1:250:04 PM		FILE NAME SIZE: D 22" x 34"	

U.S. ARMY CORPS OF ENGINEERS  
ENGINEERING AND SUPPORT  
CENTER  
4851 UNIVERSITY CDS  
HUNTSVILLE, AL 38816

CHILD DEVELOPMENT CENTER (CDC)  
STANDARD DESIGN, SMALL  
0 - 5 YEARS OLD  
**COVER SHEET**

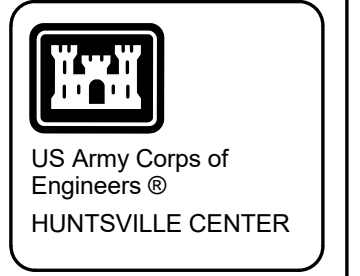
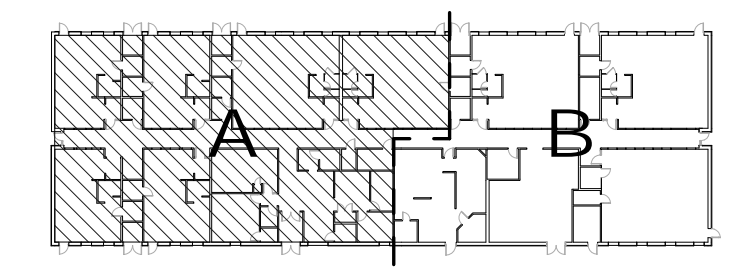
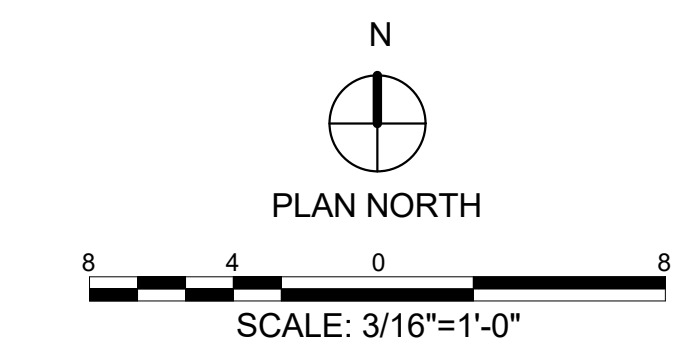
PLATE  
REFERENCE  
NUMBER  
**A-000**  
SHEET OF 120





**ENLARGED FLOOR PLAN - AREA A**  
 SCALE: 3/16" = 1'-0"

- GENERAL NOTES:**
1. ALL INTERIOR WALL DIMENSIONS ARE FROM INSIDE OF WALL FINISH TO INSIDE OF WALL FINISH UNLESS NOTED OTHERWISE.
  2. ALL ADULT/STAFF TOILET DOORS SHALL HAVE KEYED LOCK, REQUIRING A KEY TO UNLOCK THEM.



BY	DATE	DESCRIPTION	SYMBOL

DESIGN BY:	DATE: 20 SEP 2018
DESIGNED BY:	DESIGN NO: 38876
REVISION BY:	CONTRACT NO: N/A
REVISED BY:	CONTRACT CODE: N/A
DATE: 9/28/2018 12:53:13 PM	FILE NAME: A-103.dwg
SCALE: As indicated	SIZE: D 22" x 34"

CHILD DEVELOPMENT CENTER (CDC)  
 STANDARD DESIGN, SMALL  
 0 - 5 YEARS OLD  
**ENLARGED FLOOR PLAN - AREA A**

5

4

3

2

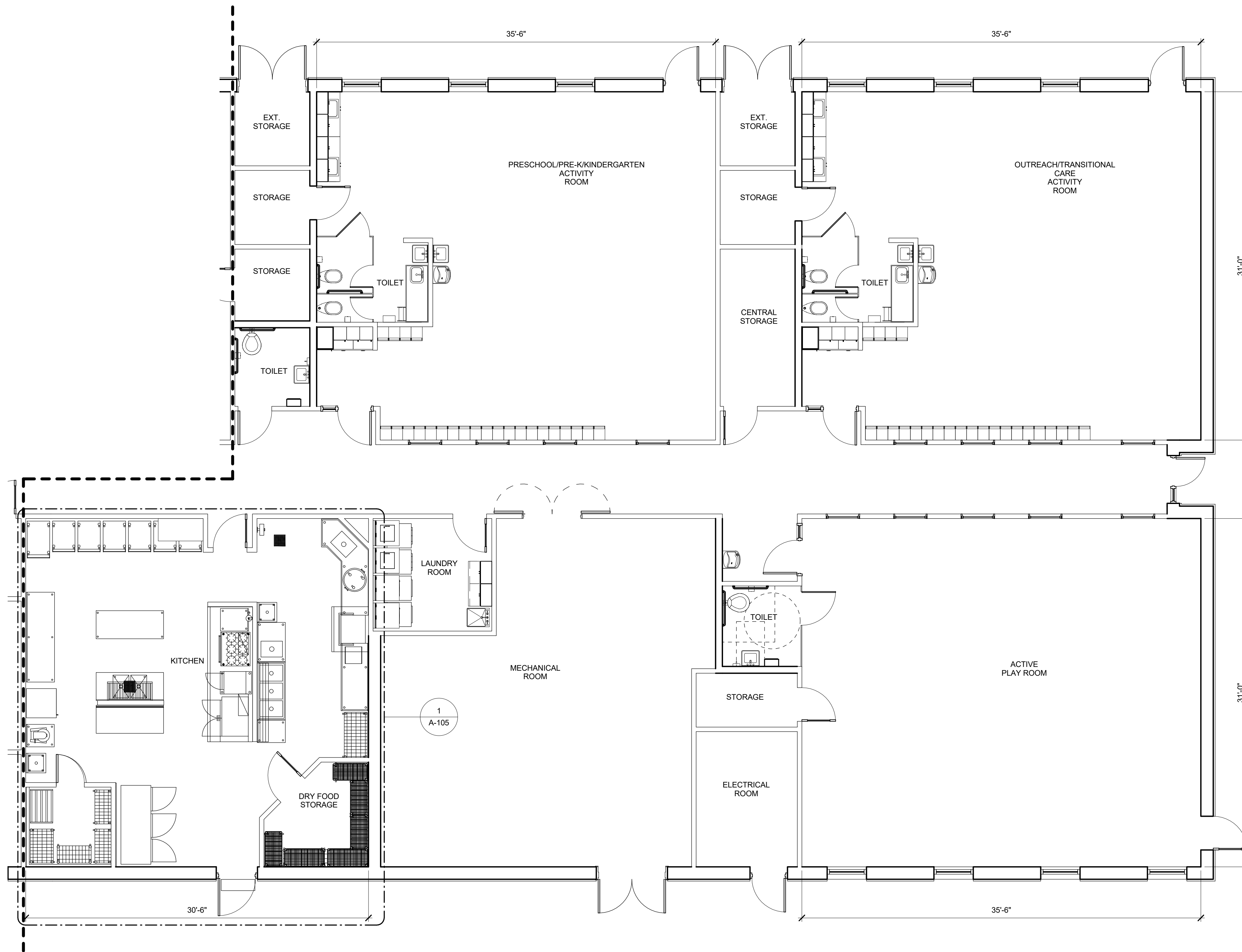
1

D

C

B

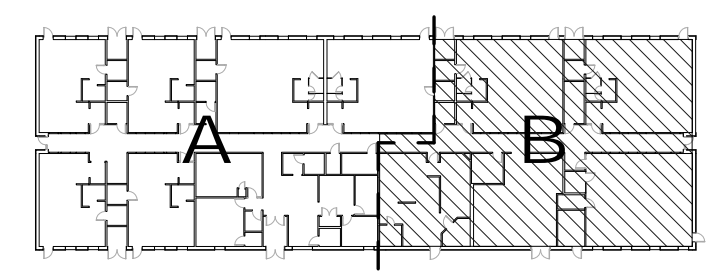
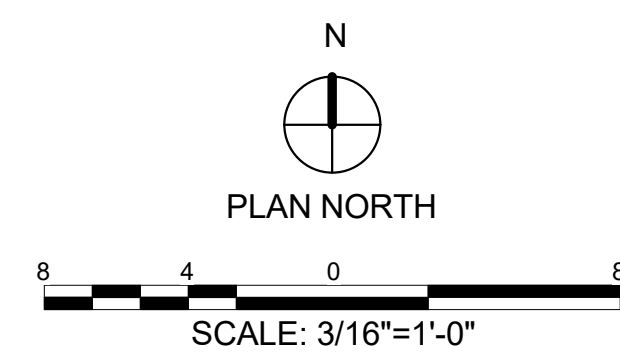
A



**ENLARGED FLOOR PLAN - AREA B**  
 SCALE: 3/16" = 1'-0"

**GENERAL NOTES:**

- 1. ALL INTERIOR WALL DIMENSIONS ARE FROM INSIDE OF WALL FINISH TO INSIDE OF WALL FINISH UNLESS NOTED OTHERWISE.
- 2. ALL ADULT/STAFF TOILET DOORS SHALL HAVE KEYED LOCK, REQUIRING A KEY TO UNLOCK THEM.



SYMBOL	DESCRIPTION	DATE	BY

DESIGN BY: M.S. ENZ	DESIGN DATE: 2018	DESIGN NO.:N/A
CHK BY: M.S. ENZ	CHK DATE: 9/28/2018	CHK NO.:N/A
DATE: 2018	DATE:2018	DATE:2018
U.S. ARMY CORPS OF ENGINEERS ENGINEERING AND SUPPORT CENTER	4825 UNIVERSITY CDS HUNTSVILLE, AL 38816	FILE NAME: 22' x 34'

CHILD DEVELOPMENT CENTER (CDC)  
 STANDARD DESIGN, SMALL  
 0 - 5 YEARS OLD  
**ENLARGED FLOOR PLAN - AREA B**

PLATE REFERENCE NUMBER  
**A-104**  
 SHEET 12 OF 120

5 4 3 2 1

### EQUIPMENT LIST

ITEM NO	QTY	DESCRIPTION	REMARKS
B1	1	AIR CURTAIN, UNHEATED	
B2	3	SHELVING; CHROME WIRE	18" X 36"
B2	1	SHELVING; CHROME WIRE	18" X 42"
B2	1	SHELVING; CHROME WIRE	18" X 48"
B2	1	SHELVING; CHROME WIRE	18" X 36"
B3	1	WALK-IN REFRIGERATOR	ID=6'-0"W X 6'-10"D X 7'-6"H
B4	1	FREEZER; 3 SECT REACH-IN	
B5	1	SHELVING; EPOXY WIRE	24" X 36"
B5	4	SHELVING; EPOXY WIRE	18" X 36"
B5	2	SHELVING; EPOXY WIRE	24" X 36"
B6	1	DUNNAGE RACK; SNGL TIER MILK CRATE	
B7	1	HAND SINK; FOOD PREP	
B8	1	MIXER; 30 QT. FLOOR	
B9	1	REFRIGERATOR; 2 SECT REACH-IN	
B10	1	REFRIGERATOR; 1 SECT REACH-IN	
B11	1	TABLE; WORK W/ UNDER SHELF	30"W. X 72"L. X 36"H.
B12	1	TABLE; WORK W/ UNDER SHELF	24"W. X 30"L. X 36"H.
B13	2	CART; (4) SHELF PRE-SCHOOL	
B14	8	CART; 3 SHELF TODDLER	
B15	4	CART; 3 SHELF INFANT	
B16	1	TABLE; WORK W/ DRW'S-U SHELF	30"D X 96"L X 36"H
B17	1	TABLE; WORK W/ DBL. SINK-U SHELF	30"D X 72"L X 36"H
B18	1	SHELF, ELEVATED W/ UTENSIL RACK	22"W X 72"L X 7'-6"H
B19	1	TABLE; WORK W/ DRW'S-U SHELF	30"D X 72"L X 36"H
B20	1	OVEN; GAS SINGLE CONVECTION	
B21	1	STEAMER; ELECT 1 COMPT 3 PAN	
B22	1	VENT HOOD; TYPE 1/FACE DISCHARGE	13'-0"L X 4'-0"D X 2'-0"H
B23	1	FIRE SUPPRESSION SYSTEM (FS)	
B24	1	RANGE; GAS 6 BURNER STANDARD OVEN	
B25		NOT USED	
B26	1	HAND SINK; WARE WASHING	
B27	1	DISPOSAL; 1.5HP WASTE & PRE-RINSE	
B28	2	WALL SHELF; S/S WIRE	
B29	1	SINK; 3 COMPARTMENT	10'-0"L X 2'-6"W X 2'-10"H
B30	1	RACK; ALUMINUM POT & PAN	
B31	1	DISH TABLE; CLEAN	30" D X 84" L X 34" H TO TOP
B32	1	BOOSTER HEATER; ELECTRIC	
B33	1	DISH MACHINE; TALL SINGLE RACK	
B34	1	CONDENSATE HOOD; TYPE 11	48"W X 42"D X 24"H
B35	1	WASTE BARREL	
B36	1	DISH TABLE; SOILED CORNER	40" & 50" X 30"D X 34"H
B37	1	DISPOSAL; 1.5 HP & PRE-RINSE SPRAY	
B38	1	HOSE REEL; WALL MOUNT	



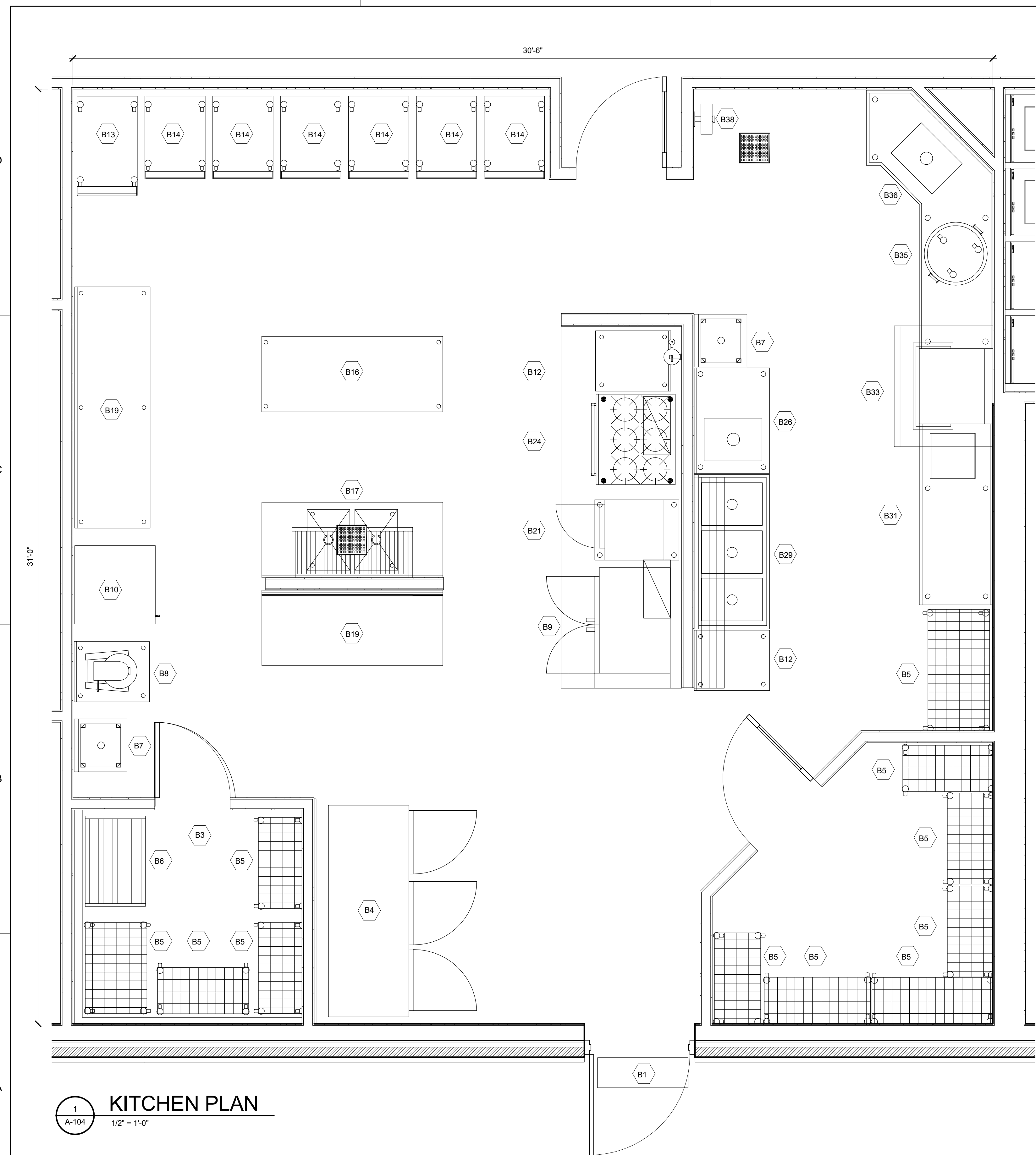
SYMBOL	DESCRIPTION	DATE	BY

DESIGN BY: JES. HRS. HRS. HRS. HRS.	DATE: 01 SEPT 2018	SOLICITATION NO.:
DESIGNED BY:	PLT DATE: 02/28/2018	CONTRACT NO.:
ISSUED BY:	PLT SCALE: As indicated	CATEGORY CODE:
REVISION BY:	FILE NAME:	
DATE: 01 SEPT 2018	SIZE: D 22" x 34"	

CHILD DEVELOPMENT CENTER (CDC)  
STANDARD DESIGN, SMALL  
0 - 5 YEARS OLD

## ENLARGED KITCHEN PLAN

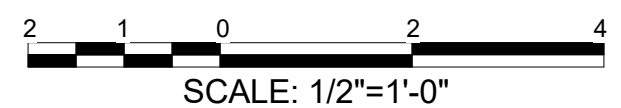
PLATE REFERENCE NUMBER  
**A-105**  
SHEET 13 OF 120



### KITCHEN PLAN

1  
A-104  
1/2" = 1'-0"

**GENERAL NOTES:**  
1. ALL INTERIOR WALL DIMENSIONS ARE FROM INSIDE OF WALL FINISH TO INSIDE OF WALL FINISH UNLESS NOTED OTHERWISE.



D  
C  
B  
A

30'-6"

31'-0"

5

4

3

2

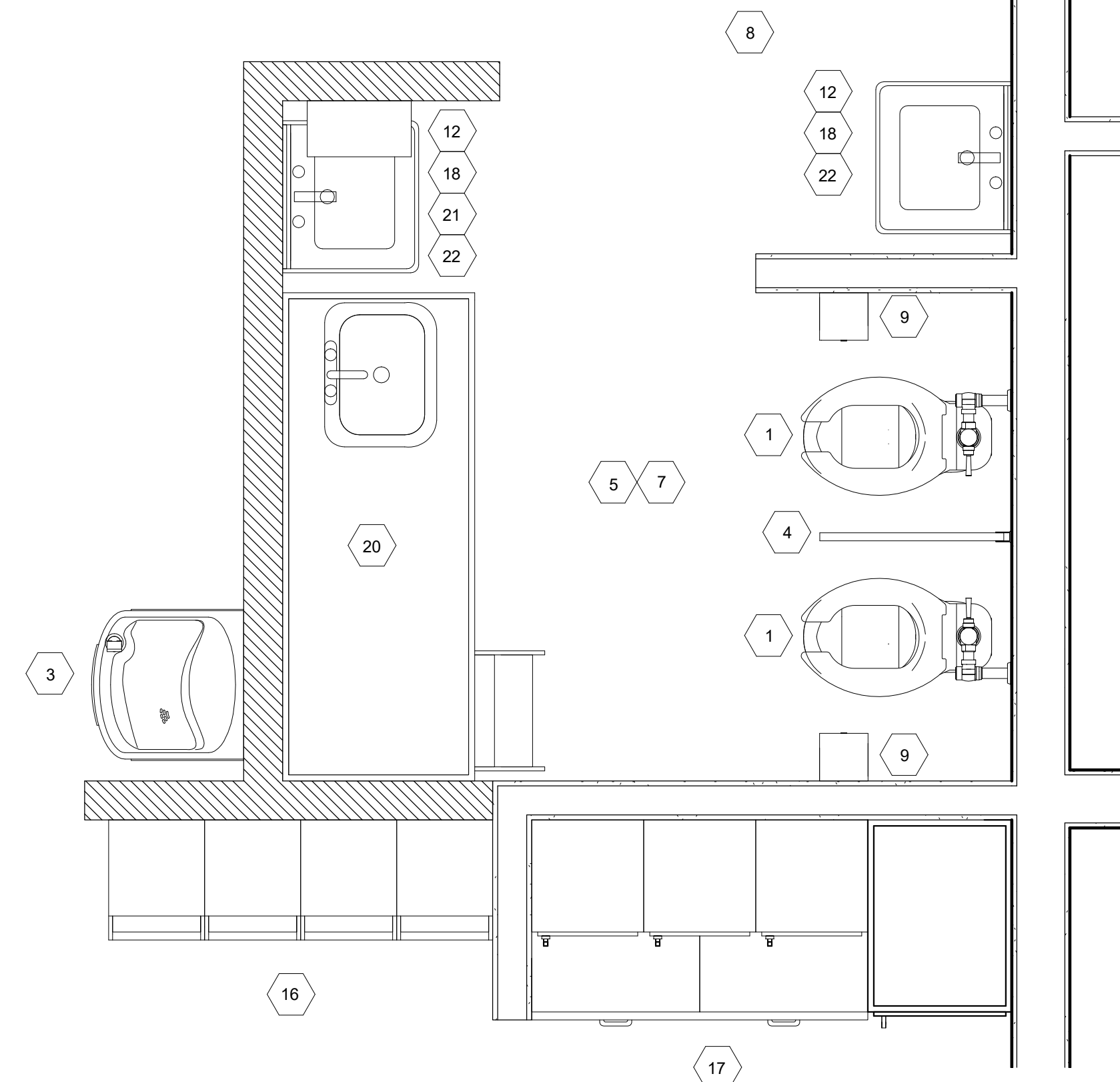
1

D

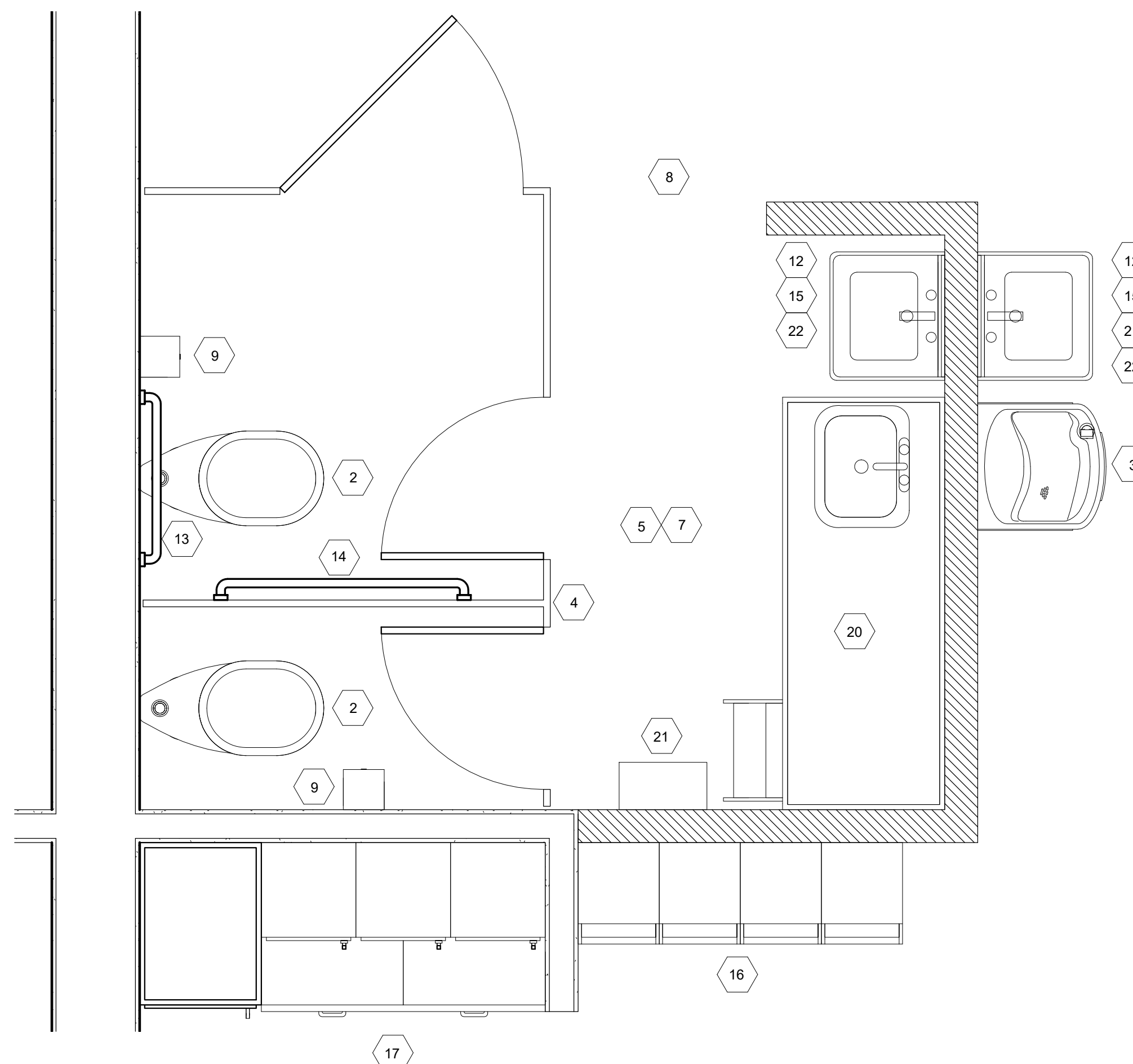
C

B

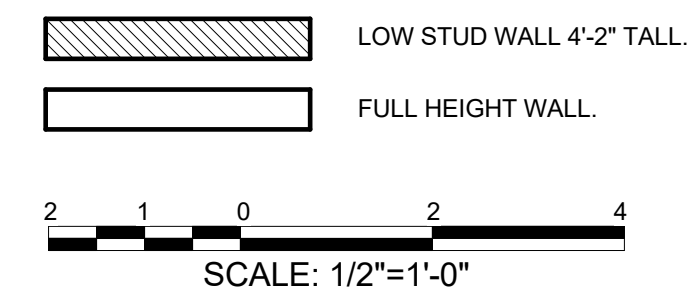
A



**1**  
A-103  
**TODDLER TOILET**  
3/4" = 1'-0"

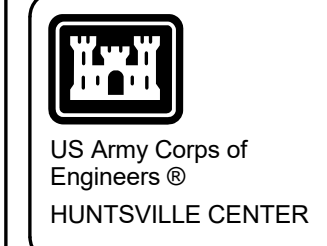


**2**  
A-103  
**PRESCHOOL TOILET**  
3/4" = 1'-0"



#### KEY NOTES

- |    |   |    |  |
|----|---|----|--|
| 1  | CHILD WATER CLOSET MOUNT RIM 10" - 11" AFF.   | 15 | CHILD LAVATORY MOUNT RIM 20" AFF.  |
| 2  | CHILD WATER CLOSET MOUNT RIM 13" - 14" AFF.   | 16 | STORAGE CUBBIES  |
| 3  | NON-REFRIGERATED DRINKING FOUNTAIN OR CHILD HC LAVATORY AS SHOWN ON FLOOR PLANS MOUNT DRINKING FOUNTAIN RIM 1'-8" AFF.  | 17 | SIGN-IN DESK   |
| 4  | TOP OF TOILET PARTITIONS SHALL BE NO HIGHER THAN 42" TALL WITH 12" CLEAR OPENING AT BOTTOM. STALL DOORS TO BE PROVIDED. | 18 | CHILD LAVATORY MOUNT RIM 17" AFF.  |
| 5  | CERAMIC TILE FLOOR FINISH ON CURED MORTAR BED.  | 19 | 1'-6" OF FULL HEIGHT WALL FOR BRACING AND ACCESSORIES.                     |
| 6  | SINK  | 20 | BABY CHANGING STATION WITH SINK, HOT AND COLD WATER. (PRE-FABRICATED UNIT) |
| 7  | PROVIDE FLOOR DRAIN.  | 21 | COMBINATION PAPER TOWEL DISPENSER/DISPOSAL. MOUNT 40" AFF.                 |
| 8  | EXTENT OF CERAMIC TILE FLOOR FIN.   | 22 | SOAP DISPENSER MOUNT 40" AFF.  |
| 9  | ROLL TISSUE HOLDER. MOUNT CENTER 13" AFF.   |    |  |
| 10 | STANDARD 24" PARTITION DOOR.  |    |  |
| 11 | HANDICAPPED PARTITION DOOR WITH A MIN. CLEARANCE OF 32"   |    |  |
| 12 | 18" X 30" MIRROR-MOUNT BOTTOM 3" FROM RIM.  |    |  |
| 13 | 24" LONG STAINLESS STEEL GRAB BAR MOUNT CENTER 20" AFF.   |    |  |
| 14 | 36" LONG STAINLESS STEEL GRAB BAR MOUNT CENTER 20" AFF.   |    |  |



SYMBOL	DESCRIPTION	DATE	BY

DESIGN BY: U.S. ARMY CORPS OF ENGINEERS ENGINEERING AND SUPPORT CENTER	DATE: 20 SEP 2018
DESIGNED BY: U.S. ARMY CORPS OF ENGINEERS ENGINEERING AND SUPPORT CENTER	SOLICITATION NO.: N/A
DRAWN BY: U.S. ARMY CORPS OF ENGINEERS ENGINEERING AND SUPPORT CENTER	CONTRACT NO.: N/A
ENGIN BY: U.S. ARMY CORPS OF ENGINEERS ENGINEERING AND SUPPORT CENTER	CATEGORY CODE: N/A
SBMT BY: U.S. ARMY CORPS OF ENGINEERS ENGINEERING AND SUPPORT CENTER	FILE NAME: 22' x 34'
U.S. ARMY CORPS OF ENGINEERS ENGINEERING AND SUPPORT CENTER	485 UNIVERSITY BL HUNTSVILLE, AL 38816
DESIGN BY:	DATE:
DESIGNED BY:	SOLICITATION NO.:
DRAWN BY:	CONTRACT NO.:
ENGIN BY:	CATEGORY CODE:
SBMT BY:	FILE NAME:
U.S. ARMY CORPS OF ENGINEERS ENGINEERING AND SUPPORT CENTER	485 UNIVERSITY BL HUNTSVILLE, AL 38816
DESIGN BY:	DATE:
DESIGNED BY:	SOLICITATION NO.:
DRAWN BY:	CONTRACT NO.:
ENGIN BY:	CATEGORY CODE:
SBMT BY:	FILE NAME:

CHILD DEVELOPMENT CENTER (CDC)  
STANDARD DESIGN, SMALL  
0 - 5 YEARS OLD  
**ENLARGED TOILET PLANS**

PLATE  
REFERENCE  
NUMBER  
**A-106**  
SHEET 14 OF 120

5

4

3

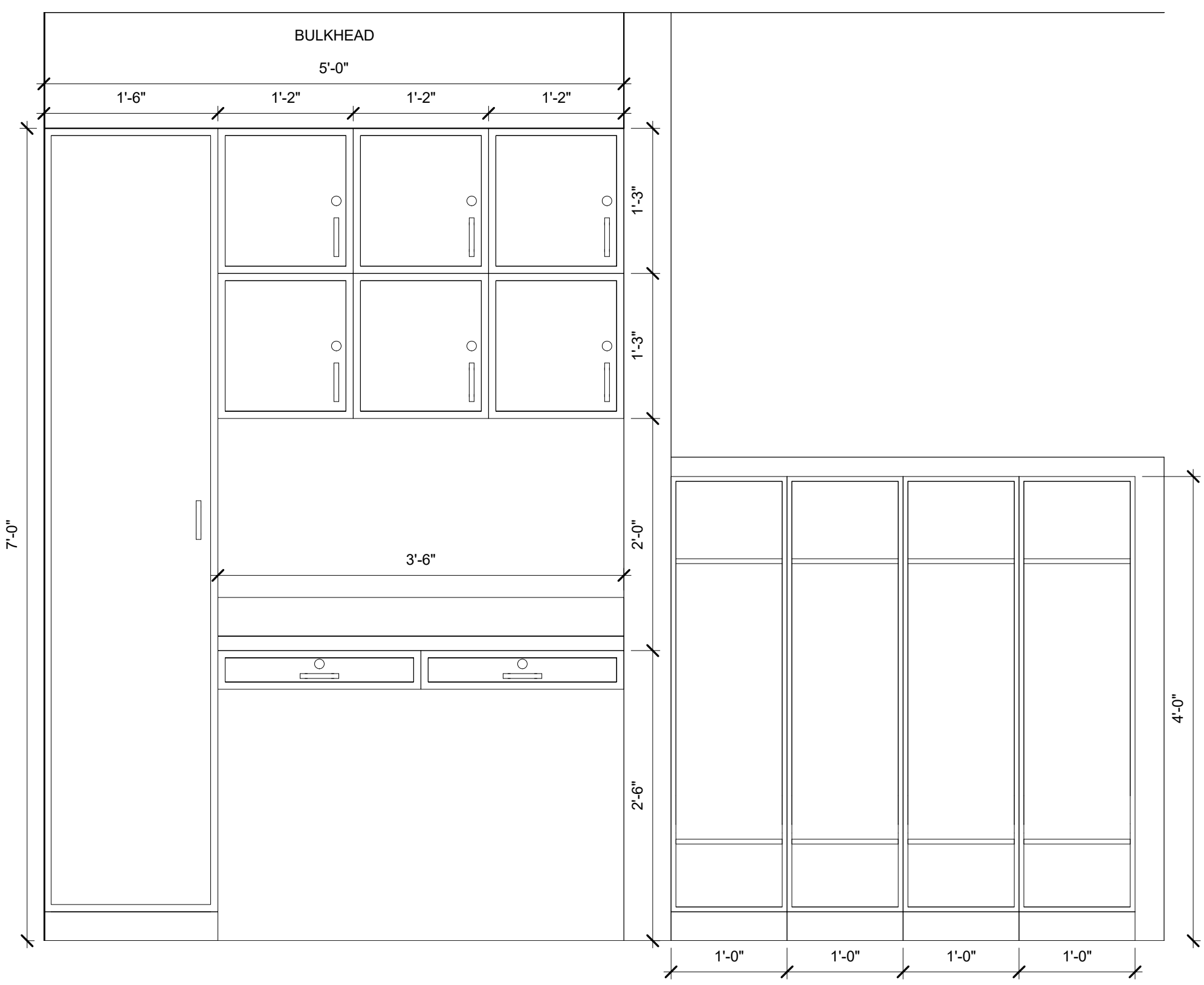
2

1



US Army Corps of Engineers  
HUNTSVILLE CENTER

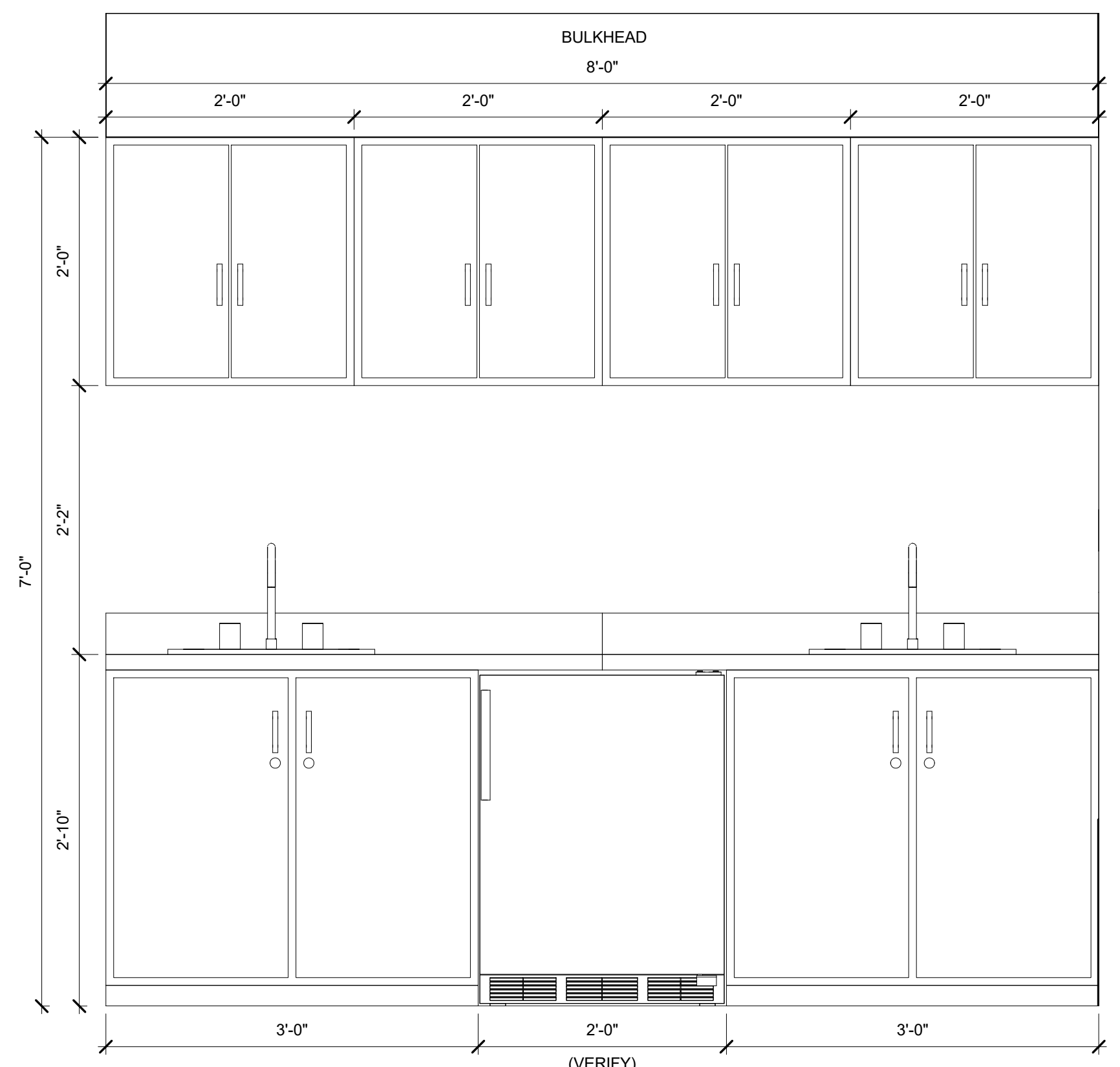
NO.	SYMBOL	DESCRIPTION	DATE	BY



1 SIGN-IN DESK/CUBBIES (TYP.)  
A-103 1" = 1'-0"

NOTE: SEE THE ROOM-BY-ROOM DESCRIPTION IN THE STANDARD DESIGN DOCUMENT FOR DETAILED INFORMATION.

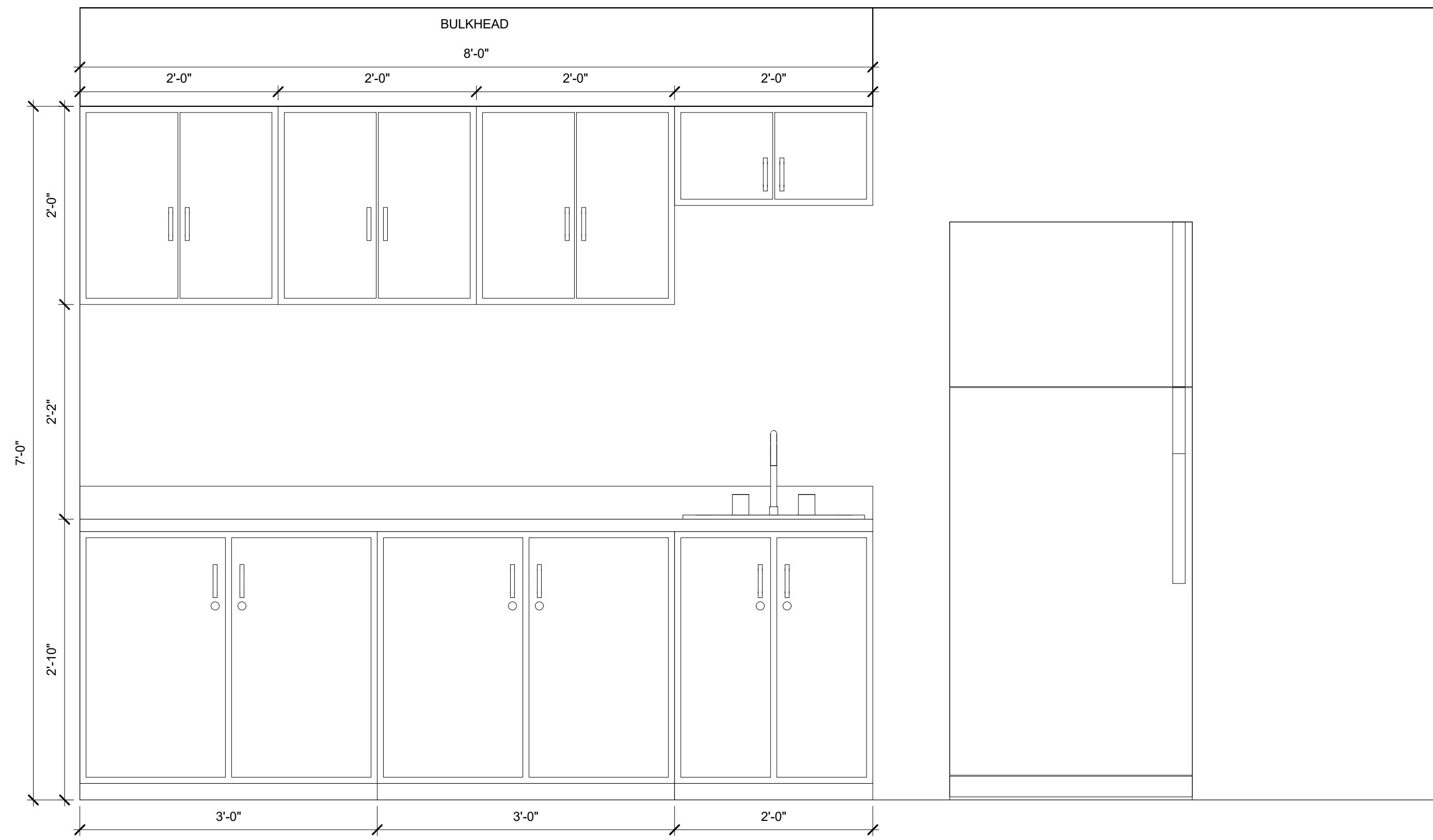
SCALE: 1"=1'-0"



2 FOOD PREP/ARTS & CRAFTS CABINETS (TYP.)  
A-103 1" = 1'-0"

NOTE: SEE THE ROOM-BY-ROOM DESCRIPTION IN THE STANDARD DESIGN DOCUMENT FOR DETAILED INFORMATION.

SCALE: 1"=1'-0"



3 STAFF LOUNGE  
A-103 1" = 1'-0"

NOTE: SEE THE ROOM-BY-ROOM DESCRIPTION IN THE STANDARD DESIGN DOCUMENT FOR DETAILED INFORMATION.

SCALE: 1"=1'-0"

DESIGN BY:	DESIGN DATE:	DESIGN NO.:	DESIGN CODE:
DESIGNED BY:	DESIGNED DATE:	DESIGNED NO.:	DESIGNED CODE:
ENGR BY:	ENGR DATE:	ENGR NO.:	ENGR CODE:
CHK BY:	CHK DATE:	CHK NO.:	CHK CODE:
DATE: 09 SEPT 2018	DATE:	NO.:	NO.:
PROJECT NO.:	PROJECT NO.:	PROJECT NO.:	PROJECT NO.:
CONTRACT NO.:	CONTRACT NO.:	CONTRACT NO.:	CONTRACT NO.:
N/A	N/A	N/A	N/A
FILE NAME:	FILE NAME:	FILE NAME:	FILE NAME:
22' x 34'	22' x 34'	22' x 34'	22' x 34'

U.S. ARMY CORPS OF ENGINEERS  
ENGINEERING AND SUPPORT  
CENTER  
4825 UNIVERSITY CDS  
HUNTSVILLE, AL 38816

CHILD DEVELOPMENT CENTER (CDC)  
STANDARD DESIGN, SMALL  
0 - 5 YEARS OLD  
**INTERIOR ELEVATIONS**

PLATE  
REFERENCE  
NUMBER  
**A-202**  
SHEET 18 OF 120