

US Army Corps
of Engineers
Omaha District

MEDIUM CHAPEL ENHANCED MINISTRY SERIES ARMY STANDARD DESIGN

VARIOUS LOCATIONS (CONUS)

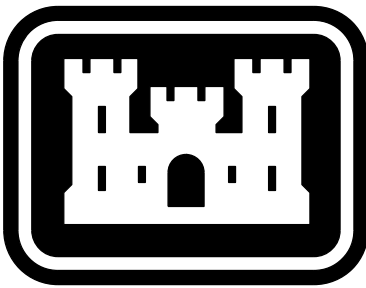
INDEX

DESIGN FILE	SHEET NO.	DESCRIPTION
RF-MECG-001.DGN	G-001	COVER
RF-MECG-002.DGN	G-002	ABBREVIATIONS
RF-CMC-101.DGN	C-101	MEDIUM ENHANCED CHAPEL SITE PLAN
RF-MECA-110.DGN	A-110	FIRST FLOOR PLAN
RF-MECA-120.DGN	A-120	MEZZANINE PLAN
RF-MECI-110.DGN	I-110	FIRST FLOOR FURNITURE PLAN
RF-MECI-111.DGN	I-111	FIRST FLOOR FURNITURE ALTERNATE LAYOUTS
RF-MECI-120.DGN	I-120	MEZZANINE FURNITURE PLAN

THIS PROJECT WAS DESIGNED BY THE OMAHA DISTRICT OF THE US ARMY CORPS OF ENGINEERS. THE INITIALS OR SIGNATURES AND REGISTRATION DESIGNATIONS OF INDIVIDUALS APPEAR ON THESE PROJECT DOCUMENTS WITHIN THE SCOPE OF THEIR EMPLOYMENT AS REQUIRED BY ER 1110-1-8152.

THE FOLLOWING SIGNATURES BELOW INDICATE OFFICIAL APPROVAL OF ALL DRAWINGS IN THIS SET DATED _____

SUBMITTED BY:	RA
CHIEF: ARCH	SECTION
SUBMITTED BY:	PE
CHIEF: CIVIL	SECTION
SUBMITTED BY:	PE
CHIEF: ELECT	SECTION
SUBMITTED BY:	PE
CHIEF: ENVR	SECTION
SUBMITTED BY:	PE
CHIEF: MECH	SECTION
SUBMITTED BY:	PE
CHIEF: STRUCT/INTER	SECTION
SUBMITTED BY:	PE
CHIEF: GEOT	SECTION
SUBMITTED BY:	CADD
	PROJECT COORD.



US Army Corps
of Engineers
Omaha District

FINAL DESIGN
SEPTEMBER 2012

--	--	--	--	--	--	--	--	--	--	--	--	--	--	--	--	--	--	--	--	--	--	--	--	--	--	--	--	--	--	--	--	--	--	--	--	--	--	--	--	--	--	--	--	--	--	--	--	--	--	--	--	--	--	--	--	--	--	--	--	--	--	--	--	--	--	--	--	--	--	--	--	--	--	--	--	--	--	--	--	--	--	--	--	--	--	--	--	--	--	--	--	--	--	--	--	--	--	--	--	--	--	--	--	--	--	--	--	--	--	--	--	--	--	--	--	--	--	--	--	--	--	--	--	--	--	--	--	--	--	--	--	--	--	--	--	--	--	--	--	--	--	--	--	--	--	--	--	--	--	--	--	--	--	--	--	--	--	--	--	--	--	--	--	--	--	--	--	--	--	--	--	--	--	--	--	--	--	--	--	--	--	--	--	--	--	--	--	--	--	--	--	--	--	--	--	--	--	--	--	--	--	--	--	--	--	--	--	--	--	--	--	--	--	--	--	--	--	--	--	--	--	--	--	--	--	--	--	--	--	--	--	--	--	--	--	--	--	--	--	--	--	--	--	--	--	--	--	--	--	--	--	--	--	--	--	--	--	--	--	--	--	--	--	--	--	--	--	--	--	--	--	--	--	--	--	--	--	--	--	--	--	--	--	--	--	--	--	--	--	--	--	--	--	--	--	--	--	--	--	--	--	--	--	--	--	--	--	--	--	--	--	--	--	--	--	--	--	--	--	--	--	--	--	--	--	--	--	--	--	--	--	--	--	--	--	--	--	--	--	--	--	--	--	--	--	--	--	--	--	--	--	--	--	--	--	--	--	--	--	--	--	--	--	--	--	--	--	--	--	--	--	--	--	--	--	--	--	--	--	--	--	--	--	--	--	--	--	--	--	--	--	--	--	--	--	--	--	--	--	--	--	--	--	--	--	--	--	--	--	--	--	--	--	--	--	--	--	--	--	--	--	--	--	--	--	--	--	--	--	--	--	--	--	--	--	--	--	--	--	--	--	--	--	--	--	--	--	--	--	--	--	--	--	--	--	--	--	--	--	--	--	--	--	--	--	--	--	--	--	--	--	--	--	--	--	--	--	--	--	--	--	--	--	--	--	--	--	--	--	--	--	--	--	--	--	--	--	--	--	--	--	--	--	--	--	--	--	--	--	--	--	--	--	--	--	--	--	--	--	--	--	--	--	--	--	--	--	--	--	--	--	--	--	--	--	--	--	--	--	--	--	--	--	--	--	--	--	--	--	--	--	--	--	--	--	--	--	--	--	--	--	--	--	--	--	--	--	--	--	--	--	--	--	--	--	--	--	--	--	--	--	--	--	--	--	--	--	--	--	--	--	--	--	--	--	--	--	--	--	--	--	--	--	--	--	--	--	--	--	--	--	--	--	--	--	--	--	--	--	--	--	--	--	--	--	--	--	--	--	--	--	--	--	--	--	--	--	--	--	--	--	--	--	--	--	--	--	--	--	--	--	--	--	--	--	--	--	--	--	--	--	--	--	--	--	--	--	--	--	--	--	--	--	--	--	--	--	--	--	--	--	--	--	--	--	--	--	--	--	--	--	--	--	--	--	--	--	--	--	--	--	--	--	--	--	--	--	--	--	--	--	--	--	--	--	--	--	--	--	--	--	--	--	--	--	--	--	--	--	--	--	--	--	--	--	--	--	--	--	--	--	--	--	--	--	--	--	--	--	--	--	--	--	--	--	--	--	--	--	--	--	--	--	--	--	--	--	--	--	--	--	--	--	--	--	--	--	--	--	--	--	--	--	--	--	--	--	--	--	--	--	--	--	--	--	--	--	--	--	--	--	--	--	--	--	--	--	--	--	--	--	--	--	--	--	--	--	--	--	--	--	--	--	--	--	--	--	--	--	--	--	--	--	--	--	--	--	--	--	--	--	--	--	--	--	--	--	--	--	--	--	--	--	--	--	--	--	--	--	--	--	--	--	--	--	--	--	--	--	--	--	--	--	--	--	--	--	--	--	--	--	--	--	--	--	--	--	--	--	--	--	--	--	--	--	--	--	--	--	--	--	--	--	--	--	--	--	--	--	--	--	--	--	--	--	--	--	--	--	--	--	--	--	--	--	--	--	--	--	--	--	--	--	--	--	--	--	--	--	--	--	--	--	--	--	--	--	--	--	--	--	--	--	--	--	--	--	--	--	--	--	--	--	--	--	--	--	--	--	--	--	--	--	--	--	--	--	--	--	--	--	--	--	--	--	--	--	--	--	--	--	--	--	--	--	--	--	--	--	--	--	--	--	--	--	--	--	--	--	--	--	--	--	--	--	--	--	--	--	--	--	--	--	--	--	--	--	--	--	--	--	--	--	--	--	--	--	--	--	--	--	--	--	--	--	--	--	--	--	--	--	--	--	--	--	--	--	--	--	--	--	--	--	--	--	--	--	--	--	--	--	--	--	--	--	--	--	--	--	--	--	--	--	--	--	--	--	--	--	--	--	--	--	--	--	--	--	--	--	--	--	--	--	--	--	--	--	--	--	--	--	--	--	--	--	--	--	--	--	--	--	--	--	--	--	--	--	--	--	--	--	--	--	--	--	--	--	--	--	--	--	--	--	--	--	--	--	--	--	--	--	--	--	--	--	--	--	--	--	--	--	--	--	--	--	--	--	--	--	--	--	--	--	--	--	--	--	--	--	--	--	--	--	--	--	--	--	--	--	--	--	--	--	--	--	--	--	--	--	--	--	--	--	--	--	--	--	--	--	--	--	--	--	--	--	--	--	--	--	--	--	--	--	--	--	--	--	--	--	--	--	--	--	--	--	--	--	--	--	--	--	--	--	--	--	--	--	--	--	--	--	--	--	--	--	--	--	--	--	--	--	--	--	--	--	--	--	--	--	--	--	--	--	--	--	--	--	--	--	--	--	--	--	--	--	--	--	--	--	--	--	--	--	--	--	--	--	--	--	--	--	--	--	--	--	--	--	--	--	--	--	--	--	--	--	--	--	--	--	--	--	--	--	--	--	--	--	--	--	--	--	--	--	--	--	--	--	--	--	--	--	--	--	--	--	--	--	--	--	--	--	--	--	--	--	--	--	--	--	--	--	--	--	--	--	--	--	--	--	--	--	--	--	--	--	--	--	--	--	--	--	--	--	--	--	--	--	--	--	--	--	--	--	--	--	--	--	--	--	--	--	--	--	--	--	--	--	--	--	--	--	--	--	--	--	--	--	--	--	--	--	--	--	--	--	--	--	--	--	--	--	--	--	--	--	--	--	--	--	--	--	--	--

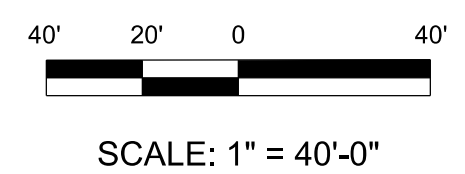
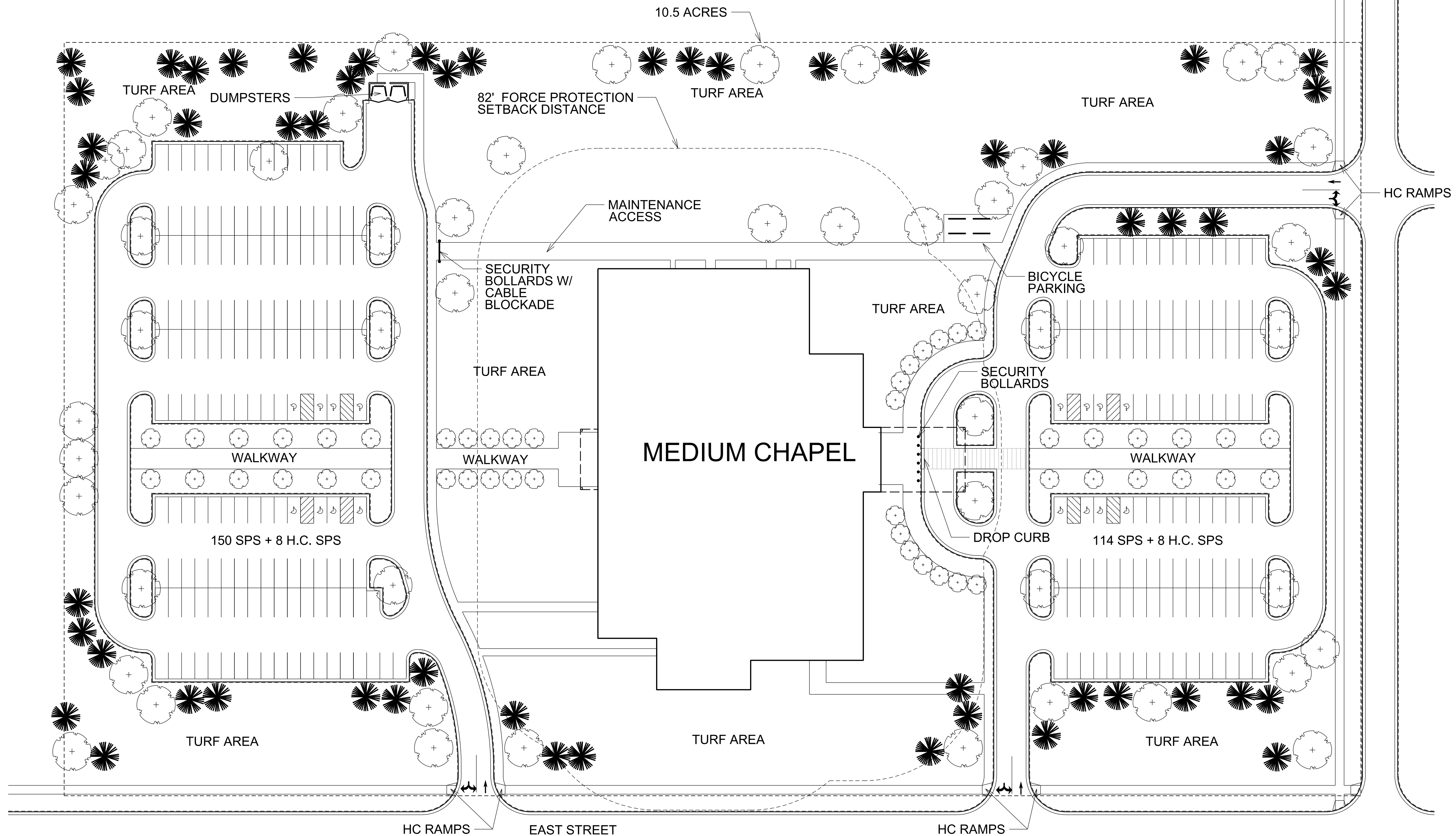
[illegible]

DESIGNED BY: X	DWN BY: X	CKD BY: X	SOLICITATION NO.: Z	DATE: SEPTEMBER 2012
		SUBMITTED BY: X	CONTRACT NO.: Z	
PLOT SCALE: 1:1	PLOT DATE: PLOT DATE	FILE NUMBER: Z		
SIZE: 34"x22"	FILE NAME: sheet_seed.dgn			

ARMY ENGINEER DISTRICT
CORPS OF ENGINEERS
OMAHA, NEBRASKA

VARIOUS LOCATIONS
ARMY STANDARD DESIGN
MEDIUM CHAPEL
ENHANCED MINISTRY SERIES
MEDIUM ENHANCED CHAPEL
SITE PLAN

SHEET
IDENTIFICATION
C-101



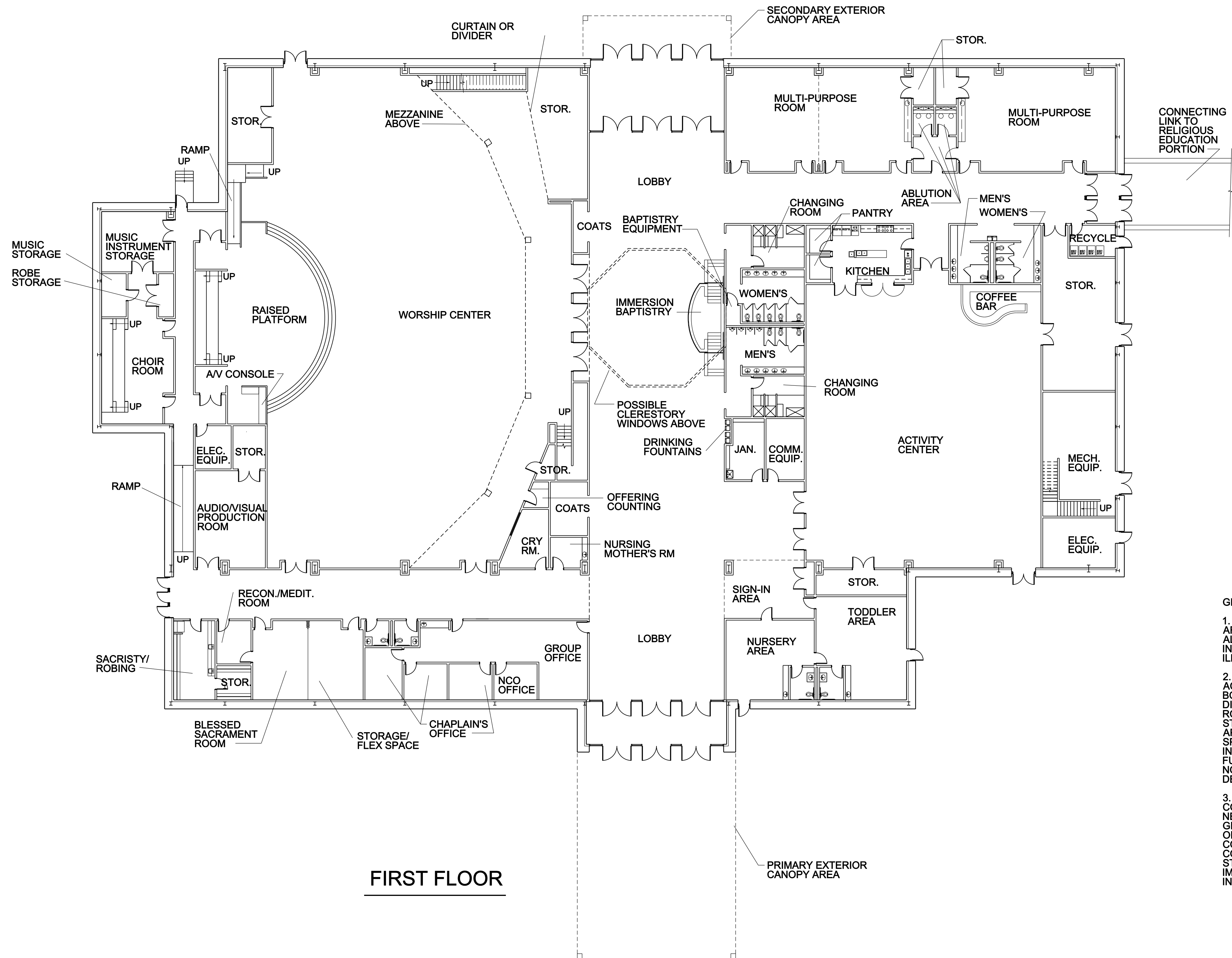
[illegible]

US ARMY ENGINEER DISTRICT CORPS OF ENGINEERS OMAHA, NEBRASKA	DESIGNED BY: KAL		CND BY: BRG		SOLICITATION NO.: Z		SEPTEMBER 2012	
	SUBMITTED BY: BRG		PLOT SCALE: 1:1		PLOT DATE:		FILE NAME:	
	SIZE:		34"x22"		sheet		seed.dgn	

VARIOUS LOCATIONS
ARMY STANDARD DESIGN
MEDIUM CHAPEL
ENHANCED MINISTRY SERIES

FIRST FLOOR PLAN

SHEET
IDENTIFICATION
A-110

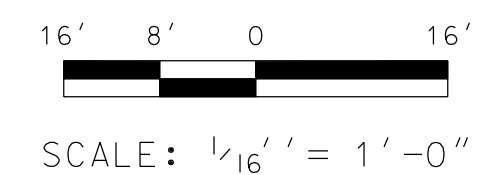


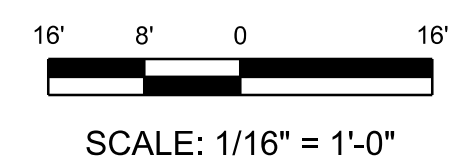
GENERAL NOTES:

1. REFER TO THE ARMY STANDARD AND ARMY STANDARD DESIGN DOCUMENTS FOR ALL FACILITY DESIGN REQUIREMENTS INCLUDING THOSE THAT MAY NOT BE ILLUSTRATED IN THESE PLANS.

2. THE LOCATION AND NUMBER OF BUILDING ACCESSORIES (MARKER BOARDS, TACK BOARDS, TALK ACCESSORIES, DIRECTORIES, ETC.) IS FLEXIBLE. PLEASE SEE ROOM FURNISHING REQUIREMENTS IN STANDARD DESIGN TEXT (AS WELL AS APPLICABLE CODES AND CRITERIA) FOR SPECIFIC FURNISHING REQUIREMENTS. EACH INSTALLATION MAY ADD TO THESE REQUIRED FURNISHINGS TO THE EXTENT THAT THEY DO NOT CONFLICT WITH OTHER ARMY STANDARD DESIGN REQUIREMENTS.

3. THE NUMBER AND LOCATION OF MEDIA CONSOLES IS FLEXIBLE BASED ON THE NEEDS OF EACH INSTALLATION AND USER GROUP. THIS DOCUMENT ILLUSTRATES SOME OF THE POSSIBLE LOCATIONS FOR MEDIA CONSOLES. THE BALCONY MEDIA CONTROL CONSOLE IS REQUIRED BY THE ARMY STANDARD, BUT ALL OTHERS MAY BE IMPLEMENTED AS REQUIRED TO SUIT INDIVIDUAL NEEDS.







FURNITURE AND EQUIPMENT LEGEND

ECCELSIASTICAL EQUIPMENT:

E01	ALTAR
E02	ALTAR, SMALL
E03	COMMUNION TABLE*
E04	CREDENCE TABLE*
E05	OFFERTORY TABLE
E06	LECTERN
E07	PULPIT
E08	PEW
E09	STACKING PEW CHAIR WITH KNEELER
E10	CHANCEL CHAIR
E11	STACKING CHAIR FOR CHOIR
E12	BAPTISMAL FONT
E13	KNEELER/PRIE-DIEU WITH SCREEN
E14	ALTAR RAIL UNIT
E15	PORTABLE ALTAR

ACCESSORIES:
A01 SMALL TRASH RECEPTACLE
A02 LARGE TRASH RECEPTACLE
A03 PAPER RECYCLE RECPTACLE
A04 TOILET RECEPTACLE

DESKS AND STORAGE:
D01 U-SHAPED WORKSTATION, R-RETURN
D02 U-SHAPED WORKSTATION, L-RETURN
D03 ADMINISTRATIVE WORKSTATION
D04 - D09 NOT USED
D10 LATERAL FILE W/ SHELVING

MISCELLANEOUS:
M01 PORTABLE PODIUM
M02 MEDIUM EQUIPMENT CART
M03 SMALL EQUIPMENT CART
M04 ORGAN
M05 GRAND PIANO
M06 BABY GRAND PIANO
M07 UPRIGHT PIANO
M08 REFRIGERATOR
M09 RANGE
M10 DISHWASHER
M11 ICE MACHINE
M12 UNDERCOUNTER REFRIGERATOR
M13 MICROWAVE
M14 WARMING DRAWER
M15 KEYBOARD/SYNTHESIZER
M16 OUTDOOR FURNITURE*
M17 PORTABLE PROJECTOR*
M18 TV FLAT SCREEN
M19 MEDIA PLAYER
M20 - M22 NOT USED
M23 CRIB
M24 STAGE
M25 STAGE DOLLY
M26 KIOSK
M27 PORTABLE PROJECTION SCREEN
M44 CHILD CHECK-IN SYSTEM AND CAR

SEATING:
S01 DESK CHAIR
S02 NOT USED
S03 GUEST CHAIR
S04 LOUNGE CHAIR
S05 NOT USED
S06 STACKING CHAIR
S07 STACKING CHAIR DOLLY
S08 NOT USED
S09 NOT USED
S10 SMALL CHILDREN'S CHAIR
S11 NOT USED
S12 ROCKER/GLIDER

TABLES:
T01 MULTI-PURPOSE TABLE, 72" X 30"
T02 CHILDREN'S TABLE
T03 TABLE DOLLY (72" X 30" TABLE)
T04 LOBBY END TABLE
T05 END TABLE
T06 30" DIA TABLE
T24 MULTI-PURPOSE TABLE, 72" DIA
T25 TABLE DOLLY (FOR 72" DIA TABLE)

NOTES:

1. ITEMS IDENTIFIED WITH AN ASTERISK IN THE LEGEND ARE OPTIONAL. COORDINATE REQUIREMENT WITH THE USER.
2. REFER TO THE ARMY STANDARD DESIGN DOCUMENT FOR REQUIRED LOCATIONS OF MARKERBOARDS, PRESENTATION BOARDS, TV'S, MEDIA PLAYERS, TOILET RECEPTACLES, AND SIMILAR TYPE ITEMS.



**US Army Corps
of Engineers®**
OMAHA DISTRICT

[illegible]

US ARMY ENGINEER DISTRICT CORPS OF ENGINEERS OMAHA, NEBRASKA	DESIGNED BY:	LOH	DATE:	SEPTEMBER 2012
	DRAWN BY:	LOH	SOLICITATION NO.:	2
	CHKD BY:	WHB	CONTRACT NO.:	2
	SUBMITTED BY:		FILE NUMBER:	
	PLOT SCALE:	1:1	PLOT DATE:	
			FILE NAME:	

VARIOUS LOCATIONS
ARMY STANDARD DESIGN
MEDIUM CHAPEL
ENHANCED MINISTRY SERIES
FIRST FLOOR FURNITURE
ALTERNATE LAYOUTS

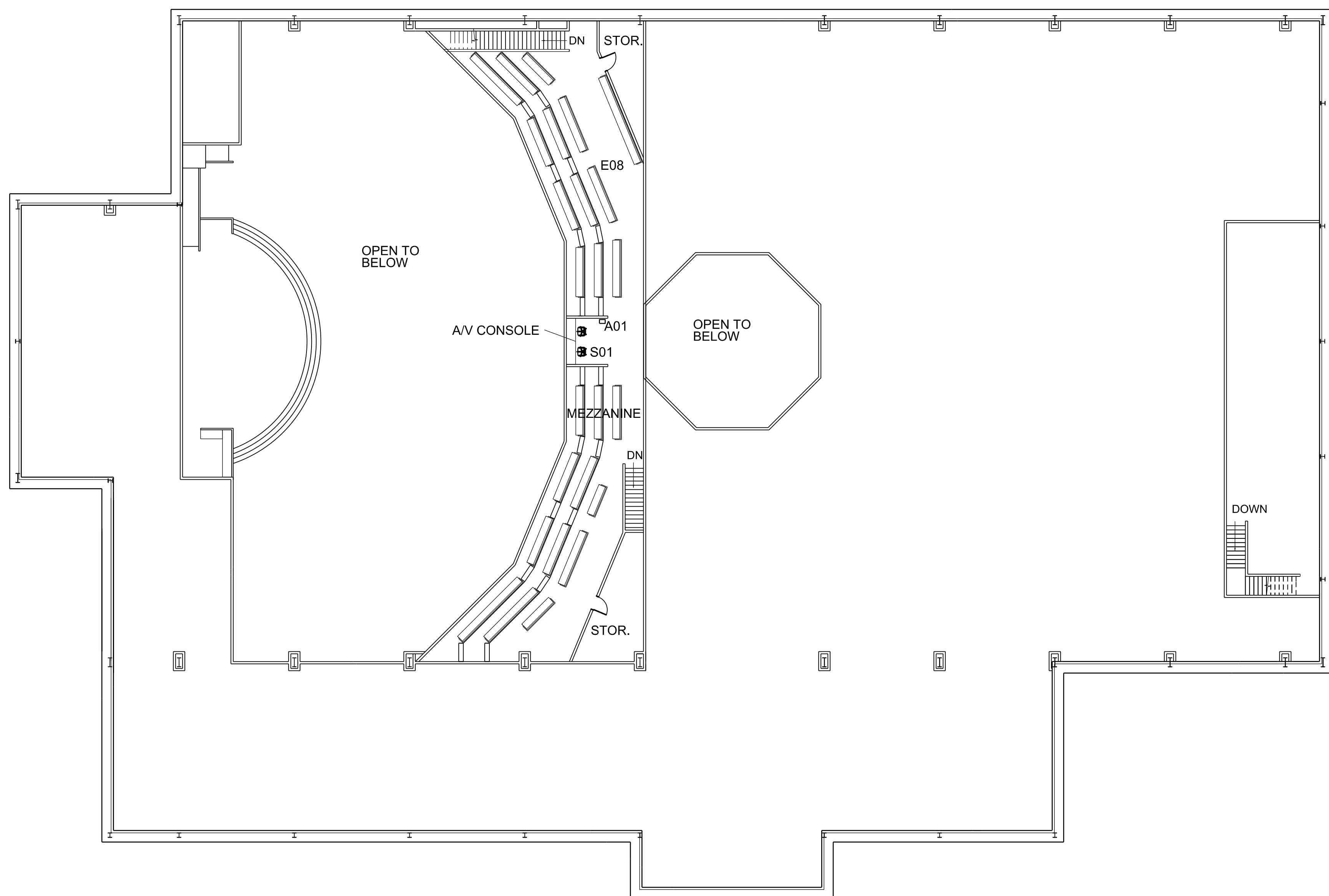
SHEET
IDENTIFICATION
I-111

D

C

B

A



MEZZANINE FURNITURE PLAN

SCALE: 1/16" = 1'-0"

FURNITURE AND EQUIPMENT LEGEND

ECCLESIASTICAL EQUIPMENT:

E01 ALTAR
E02 ALTAR, SMALL
E03 COMMUNION TABLE*
E04 CREDENCE TABLE*
E05 OFFERTORY TABLE
E06 LECTERN
E07 PULPIT
E08 PEW
E09 STACKING PEW CHAIR WITH KNEELER
E10 STACKING CHAIR
E11 STACKING CHAIR FOR CHOIR
E12 BAPTISMAL FONT
E13 KNEELER/PRIE-DIEU WITH SCREEN
E14 ALTAR RAIL UNIT
E15 PORTABLE ALTAR

ACCESSORIES:

A01 SMALL TRASH RECEPTACLE
A02 LARGE TRASH RECEPTACLE
A03 PAPER RECYCLE RECPTACLE
A04 TOILET RECEPTACLE

DESKS AND STORAGE:

D01 U-SHAPED WORKSTATION, R-RETURN
D02 U-SHAPED WORKSTATION, L-RETURN
D03 ADMINISTRATIVE WORKSTATION
D04 - D09 NOT USED
D10 LATERAL FILE W/ SHELVE

MISCELLANEOUS:

M01 PORTABLE PODIUM
M02 MEDIUM EQUIPMENT CART
M03 SMALL EQUIPMENT CART
M04 ORGAN
M05 GRAND PIANO
M06 BABY GRAND PIANO
M07 UPRIGHT PIANO
M08 REFRIGERATOR
M09 RANGE
M10 DISHWASHER
M11 ICE MACHINE
M12 UNDERCOUNTER REFRIGERATOR
M13 MICROWAVE
M14 WARMING DRAWER
M15 KEYBOARD/SYNTHESIZER
M16 OUTDOOR FURNITURE*
M17 PORTABLE PROJECTOR
M18 TV, FLAT SCREEN
M19 MEDIA PLAYER
M20 - M22 NOT USED
M23 CRIB
M24 STAGE
M25 STAGE DOLLY
M26 KIOSK
M27 PORTABLE PROJECTION SCREEN
M44 CHILD CHECK-IN SYSTEM AND CART

SEATING:

S01 DESK CHAIR
S02 NOT USED
S03 GUEST CHAIR
S04 LOUNGE CHAIR
S05 NOT USED
S06 STACKING CHAIR
S07 STACKING CHAIR DOLLY
S08 NOT USED
S09 NOT USED
S10 SMALL CHILDREN'S CHAIR
S11 NOT USED
S12 ROCKER/GLIDER

TABLES:

T01 MULTI-PURPOSE TABLE, 72" X 30"
T02 CHILDREN'S TABLE
T03 TABLE DOLLY (72" X 30" TABLE)
T04 LOBBY END TABLE
T05 END TABLE
T06 30" DIA TABLE
T24 MULTI-PURPOSE TABLE, 72" DIA
T25 TABLE DOLLY (FOR 72" DIA TABLE)

NOTES:

1. ITEMS IDENTIFIED WITH AN ASTERISK IN THE LEGEND ARE OPTIONAL. COORDINATE REQUIREMENT WITH THE USER.
2. REFER TO THE ARMY STANDARD DESIGN DOCUMENT FOR REQUIRED LOCATIONS OF MARKERBOARDS, PRESENTATION BOARDS, TV'S, MEDIA PLAYERS, TOILET RECEPTACLES, AND SIMILAR TYPE ITEMS.



**US Army Corps
of Engineers®**
OMAHA DISTRICT

[illegible]

US ARMY ENGINEERS DISTRICT CORPS OF ENGINEERS OMAHA, NEBRASKA	DESIGNED BY:	DATE:	NUMBER 1212
	DRAWN BY: LOH	CKD BY: WRB	SOLUTION NO.: Z
	SUBMITTED BY: WRB	CONTRACT NO.: Z	
	PILOT SCALE: 1:1	PILOT DATE: 11/11	FILE NUMBER: Z
	DATE: 3/4/22	FILE: 110328	sheet 13 of 38 -- send digit

MEZZANINE FURNITURE PLAN

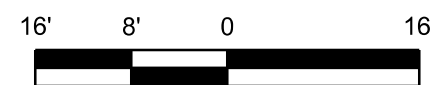
VARIOUS LOCATIONS

ARMY STANDARD DESIGN

MEDIUM CHAPEL

ENHANCED MINISTRY SERIES

SHEET
IDENTIFICATION
I-120



SCALE: 1/16" = 1'-0"