

---

# MEDIUM RELIGIOUS EDUCATION FACILITY

## ARMY STANDARD DESIGN

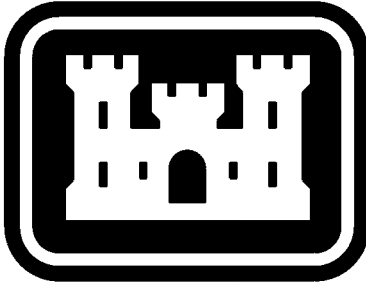
### VARIOUS LOCATIONS (CONUS)

DESIGN FILE	DRAWING NUMBER	SHEET NUMBER	DESCRIPTION
RF_EMG-101.DGN	G-101	1	COVER SHEET AND INDEX
RF EMC-100.DGN	C-100	2	MEDIUM RELIGIOUS EDUCATION FACILITY GENERIC SITE PLAN
RF_EMA-100.DGN	A-100	3	MEDIUM RELIGIOUS EDUCATION FACILITY FLOOR PLAN
RF_EMA-200.DGN	A-200	4	MEDIUM RELIGIOUS EDUCATION FACILITY BUILDING ELEVATIONS
RF_EMI-100.DGN	I-100	5	MEDIUM RELIGIOUS EDUCATION FACILITY FURNITURE LAYOUT

THIS PROJECT WAS DESIGNED BY THE OMAHA DISTRICT OF THE US ARMY CORPS OF ENGINEERS. THE INITIALS OR SIGNATURES AND REGISTRATION DESIGNATIONS OF INDIVIDUALS APPEAR ON THESE PROJECT DOCUMENTS WITHIN THE SCOPE OF THEIR EMPLOYMENT AS REQUIRED BY ER 1110-1-8152.

THE FOLLOWING SIGNATURES BELOW INDICATE OFFICIAL APPROVAL OF ALL DRAWINGS IN THIS SET DATED \_\_\_\_\_

SUBMITTED BY:	RA
CHIEF: ARCH	SECTION
SUBMITTED BY:	PE
CHIEF: CIVIL	SECTION
SUBMITTED BY:	PE
CHIEF: ELECT	SECTION
SUBMITTED BY:	PE
CHIEF: ENVIR	SECTION
SUBMITTED BY:	PE
CHIEF: MECH	SECTION
SUBMITTED BY:	PE
CHIEF: STRUCT/INTER	SECTION
SUBMITTED BY:	PE
CHIEF: GEOT	SECTION
SUBMITTED BY:	CADD
	PROJECT COORD.



US Army Corps  
of Engineers  
Omaha District

## D

B<sub>2</sub>

Q10

[illegible]

U.S. ARMY CORPS OF ENGINEERS OMAHA, NEBRASKA	DRAW BY:	JUD	SOLICITATION NO.:	Z
	DATE:	1/10	CONTRACT NO.:	Z
	SUBMITTED BY:	X	FILE NUMBER:	
	PLOT SCALE:	1" = 100'	PLOT DATE:	
	FILE NAME:		FILE NAME:	
	SIZE:	0.11 in / in.		8/16/2012

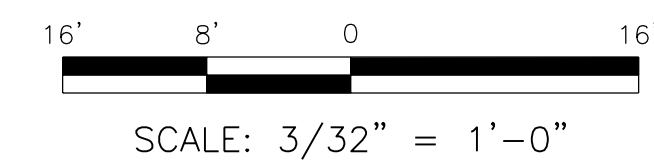
3D BIM TRANSLATION  
ARMY STANDARD DESIGN  
RELIGIOUS EDUCATION FACILITY  
MEDIUM RELIGIOUS EDUCATION FACILITY  
GENERIC SITE PLAN

SHEET  
IDENTIFICATION  
**C-100**





**2 BUILDING ELEVATION**  
A-100 3/32" = 1' 0"

[illegible]

US ARMY ENGINEER DISTRICT CORPS OF ENGINEERS OMAHA, NEBRASKA	DESIGNED BY:	DATE:
	DRAWN BY:	JULY 2012
	CHECKED BY:	SOLICITATION NO.:
	APPROVED BY:	2
	SUBMITTED BY:	CONTRACT NO.:
BRG	2	FILE NUMBER:
	PLOT SCALE: PLOT DATE: 0:1 ft-m / in 8/6/2012	
SIZE:	FILE NAME:	
	RF_EMA-200.dgn	

VARIOUS LOCATIONS  
3D BIM TRANSLATION  
ARMY STANDARD DESIGN  
RELIGIOUS EDUCATION FACILITY

MEDIUM RELIGIOUS EDUCATION FACILITY  
BUILDING ELEVATIONS

**SHEET  
IDENTIFICATION  
A-200**



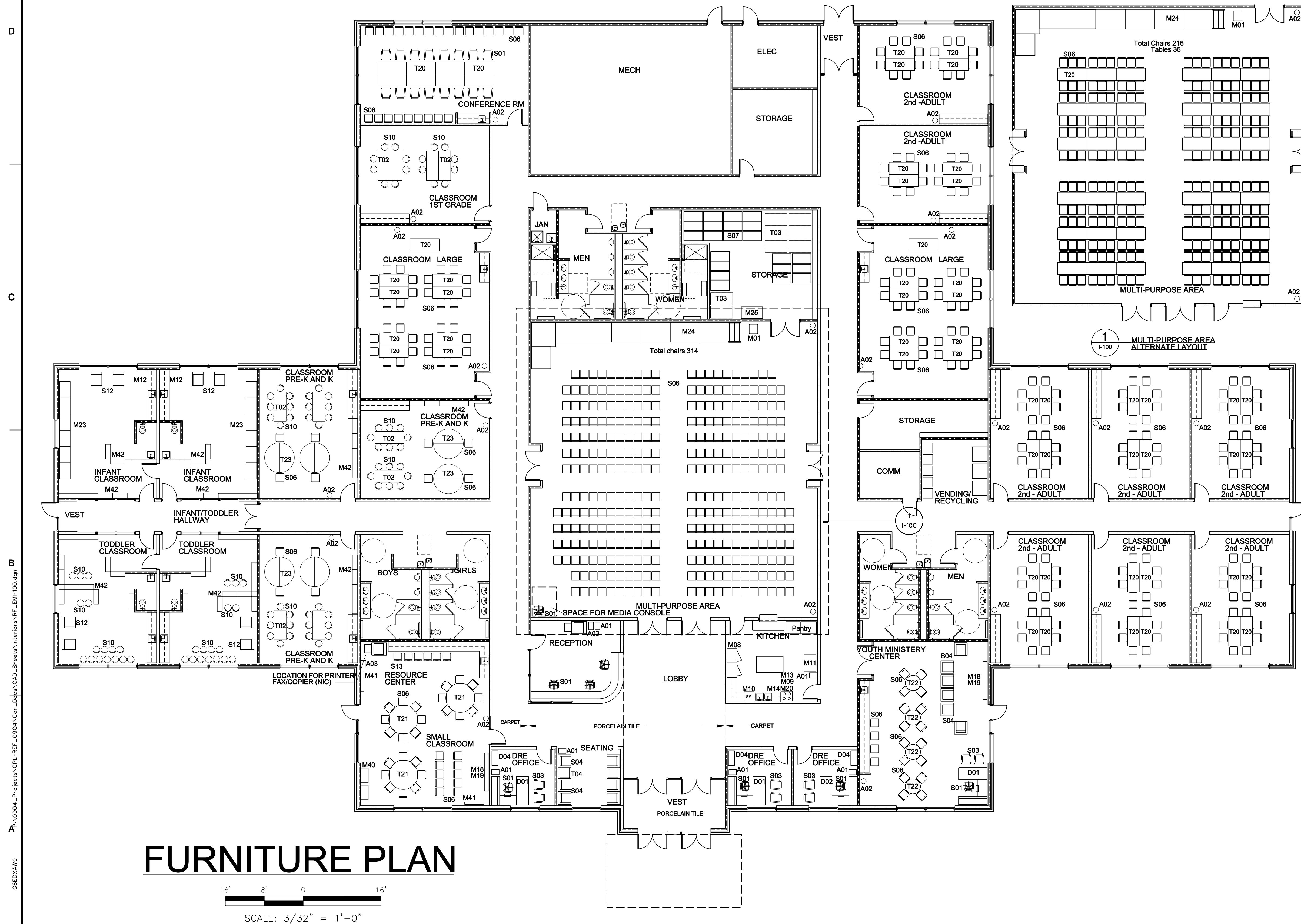
**US Army Corps  
of Engineers®**  
OMAHA DISTRICT

[illegible]

	SOLICITATION NO.: Z	
	AWARDED BY: JULY 2012	
	CMD BY: WRB	
	SUBMITTED BY:	
	SCALE: PLOT DATE: D 11 m' in 8/76/2012	
	FILE NUMBER: Z	
SIZE:	FILE NAME: RF_EMR_100.dgn	

VARIOUS LOCATIONS  
3D BIM TRANSLATION  
ARMY STANDARD DESIGN  
RELIGIOUS EDUCATION FACILITY  
MEDIUM RELIGIOUS EDUCATION FACILITY  
FURNITURE LAYOUT

SHEET  
IDENTIFICATION  
**I-100**



## FURNITURE AND EQUIPMENT LEGEND

ADMIN FURNITURE
-----------------

**ACCESSORIES:**

- A01 SMALL TRASH RECEPTACLE  
A02 LARGE TRASH RECEPTACLE  
A03 PAPER RECYCLE RECEPTACLE

**DESKS AND STORAGE:**

- D01 U-SHAPED WORKSTATION, R-RETURN  
D02 U-SHAPED WORKSTATION, L-RETURN  
D03 NOT USED  
D04 BOOKCASE

**MISCELLANEOUS:**

- M01 PORTABLE PODIUM  
M02 NOT USED  
M03 NOT USED  
M04 NOT USED  
M05 NOT USED  
M06 NOT USED  
M07 NOT USED  
M08 REFRIGERATOR  
M09 RANGE  
M10 DISHWASHER  
M11 ICE MACHINE  
M12 UNDERCOUNTER REFRIGERATOR  
M13 MICROWAVE  
M14 WARMING DRAWER  
M15 NOT USED  
M16 NOT USED  
M17 PORTABLE PROJECTOR  
M18 TV  
M19 MEDIA PLAYER  
M20 RANGE HOOD  
M21 NOT USED  
M22 NOT USED  
M23 CRIB  
M24 STAGE  
M25 STAGE DOLLY  
M40 STORAGE CABINET  
M41 OPEN DISPLAY SHELVING  
M42 LOW DISPLAY SHELVING  
M43 NOT USED

## SEATING

- S01 DESK CHAIR  
S02 NOT USED  
S03 GUEST CHAIR  
S04 LOUNGE CHAIR  
S05 NOT USED  
S06 STACKING CHAIR  
S07 STACKING CHAIR DOLLY  
S08 NOT USED  
S09 NOT USED  
S10 SMALL CHILDREN'S CHAIR  
S11 MEDIUM CHILDREN'S CHAIR  
S12 ROCKER/GLIDER  
S13 HIGH STOOL

TABLES:

- T01 NOT USED  
T02 CHILDREN'S TABLE  
T03 TABLE DOLLY  
T04 LOBBY END TABLE  
T05 NOT USED  
T06 NOT USED  
T20 CLASSROOM TABLE  
T21 72" DIA TABLE  
T22 36" DIA TABLE  
T23 CHILDREN'S CRESENT TABLE

NOTES:

1. WHITE BOARD (WB) AND BULLETIN BOARD (BB) ARE CF/CI.